



2024 Lotus Cup Europe – Technical Regulations

1. TECHNICAL REGULATIONS

1.1. General Description:

1.1.1. Lotus Cup Europe is open to vehicles complying with applicable FIA/Motorsport UK technical regulations.

Specifically:

Seat belts will comply with FIA Appendix J Art 253, Art. 6

Fire extinguishers will comply with FIA Technical list 6,16 or 52

Roll cages comply with either FIA Appendix J Art 253 or Appendix J Art 259 or homologated for FIA use or have National ASN approval.

Fuel tanks will comply with FT3-1999 as a minimum standard

1.1.2. Race Groups: Competitors will be appointed to a group upon registration.

1.1.3. The series is open to cars that comply with the four groups laid out below. All cars must be approved by the organisers. Any new components released by Lotus Cars must be accepted for use in the series before competitors use them, if Lotus are unable to supply a part the organisers may permit an alternative. The organisers will notify competitors by sending an official bulletin.

1.1.4. It should be clearly understood that unless a modification or removal/change of an item is specifically permitted by these regulations, that any modification or removal/change or repositioning of an item is prohibited. LoTRDC reserves the right to overrule any part that is felt to be outside the spirit of the series. If in any doubt about what is/is not acceptable, the onus is on the entrant to ask first.

2. GROUPS:

There will be four groups for Lotus Exige, Elise, 2 Eleven, 340R, Evora or Emira. Groups are defined based on the type of car. The basic principle of this is as follows:

2.1. Group - Production

2.1.1. For the Elise S3 with a maximum hub power of 205bhp.

2.1.2. Also for Series 1 and 2 Elises with a maximum hub power of 170bhp. Also open to series 2 Exige and 111r Toyota NA engine cars with a maximum hub power of 190bhp.

2.2. Group - 2-Eleven & Open (2110)

2.2.1. For 2-Eleven cars up to a maximum of 250bhp at the hubs with a minimum weight of 815KG including driver.

2.2.2. Also for four cylinder Exige Cup cars, the Elise Cup PB-R and other cars based on the Elise chassis that are not eligible for other groups. With a maximum power at the hubs of 260bhp and with a maximum power to weight of 285.7bhp/tonne including driver.

2.3. Group – GT Cup

2.3.1. For Evora race cars with a maximum power at the hubs of 380bhp and with a maximum power to weight of 304bhp/tonne including driver.

2.3.2. Also for Emira GT4 & Emira concept race cars. With a maximum power at the hubs of 425bhp and with a maximum power to weight of 304bhp/tonne including driver.

2.4. Group – Exige V6



2024 Lotus Cup Europe – Technical Regulations

2.4.1. For all factory specification Exige V6 race cars with a maximum power at the hubs of 340bhp and with a maximum power to weight of 304bhp/tonne including driver.

2.5. Group: Production

2.5.1. Series 1 and 2 Elise with Rover engine

2.5.1.1. Chassis: **Production**

2.5.1.1.1. The construction type, design and material must remain as standard. This includes the sub frame.

2.5.1.1.2. No additional bracing/supports may be added.

2.5.1.2. Bodywork: **Production**

2.5.1.2.1. All cars must retain the standard road car's profile, and be maintained to a high standard of finish, whilst it's understandable that damage may occur during a weekend, it's important that this is rectified before the next meeting. This is important to keep the image and profile of the series.

2.5.1.2.2. All body panels must remain as standard production in size, shape, profile and material (i.e. Pre-preg GRP, Kevlar and Carbon fibre are not permitted).

2.5.1.2.3. Front and rear clamshells may be modified solely for the purpose of ease of removal. No other changes are permitted.

2.5.1.2.4. Side scoops may be fitted but must not protrude further than the side profile of the car. Only series 1 style side scoops are permitted on series 1 cars, and series 2 style on series 2 cars. Material is free.

2.5.1.2.5. Side scoop inner vents may be removed but the external holes in the clam must be standard size and profile. No clam material may be removed.

2.5.1.2.6. S1 Elise 'Sport 160' style rear wing may be fitted and material is free.

2.5.1.2.7. A small Front Spoiler/splitter that's within the profile of the car as shown in section 3.4 may be fitted and material is free.

2.5.1.2.8. Under trays must not exceed overall dimensions of the standard part. Ducts and holes within the tray may be relocated. Material is free.

2.5.1.2.9. Rear diffuser may be extended rearwards protruding no more than 50mm from the rear bodywork (measured from the rear clam where the diffuser is attached at the rear) and complying with the ground clearance rules in 2.4.1.5. Material is free.

2.5.1.2.10. The clam under rear grills (fog and reverse lights) may be removed however the grill must remain.

2.5.1.2.11. The body behind the number plate can be removed to an area no larger than a standard number plate (520mm x 130mm). If a hole is created it should be covered in mesh.

2.5.1.2.12. Wheel arch liners may be removed and the inner lip of the wheel arch reduced to allow tyre clearance.

2.5.1.2.13. Heater matrix, blower fan and ducting to distribution flap may be removed.

2.5.1.2.14. Interior must remain as standard with the exception of required items to meet FIA regulations. The passenger seat may be removed. The following items may also be



2024 Lotus Cup Europe – Technical Regulations

removed; carpets, roof lining, coin tray, rear speaker pods, sun visors, sill pads, passenger foot rest, dashboard infill panels, handbrake cover and gear lever cover.

- 2.5.1.2.15. Steering wheel and steering wheel bosses may be replaced with a suitable FIA compliant alternative.
- 2.5.1.2.16. Glass must remain as E marked glass with the exception of the rear screen which may be replaced with a polycarbonate version. Glass side windows must be covered in an anti-shatter film.
- 2.5.1.2.17. Front windows can be replaced with Polycarbonate alternative. However, it is clearly understood that if the organisers ask for the window to be replaced due to its condition or quality this must be accepted or a Glass window as referred to in 2.4.12.16 must be fitted.
- 2.5.1.2.18. Side windows can be replaced with Polycarbonate or Perspex alternatives, this can include sliders. Broken or damaged windows will not be permitted.
- 2.5.1.2.19. Heated front screens are permitted and/or aftermarket electric fans may be installed to replace the standard heater.
- 2.5.1.2.20. An appropriate red warning light must be fitted to comply with FIA regulations.
- 2.5.1.2.21. Supplementary gauges may be added such as oil temperature and pressure.
- 2.5.1.2.22. There should be substantial towing eyes securely fixed to the main structure of the vehicle, front and rear, within the confines of the body to enable the vehicle to be moved. Towing eyes should have a minimum internal diameter of 60mm. Towing eyes/towing points should be painted a contrasting bright color (Day-Glo red, orange or yellow). Q 19.1.3
- 2.5.1.2.23. Bonnet and boot lid fastenings and hinges may be modified or replaced.
- 2.5.1.2.24. The boot bulkhead and boot floor may be removed providing sufficient material remains to support the weight of the rear clamshell.
- 2.5.1.2.25. Headlamps, front direction indicators and side repeaters including associated mountings may be removed and replaced by a cover in the original profile. However, if all front lights are removed two driving lamps must be fitted and be in effective working condition.
- 2.5.1.3. **Engine:** **Production**
- 2.5.1.3.1. Must not exceed a maximum power output of 170bhp at the hubs. LoTRDC may adjust the max power by giving two weeks' notice before any round.
- 2.5.1.3.2. The power limit must be strictly adhered too – LoTRDC will require cars to be power tested before and during the season as directed.
- 2.5.1.3.3. As per Motorsport UK regulations including J 5.4.1-3 (engines), J 5.10.1-2 (cooling), J 5.12.1 (oil systems), J 5.13.1-7 (fuel systems).
- 2.5.1.3.4. Engine must retain the standard inlet plenum (either plastic or VVC style alloy versions).
- 2.5.1.3.5. Engine must retain the standard single throttle body in un-modified form (MGF TF 52mm is permitted) – Multiple throttle bodies are not permitted.
- 2.5.1.3.6. Aftermarket 421 exhaust manifolds are permitted.



2024 Lotus Cup Europe – Technical Regulations

- 2.5.1.3.7. Exhaust system after the manifold are free, although Motorsport UK regulations should of course be observed as 5.1.
- 2.5.1.3.8. Compression ratio must remain standard.
- 2.5.1.3.9. Engine rods, pistons and crankshaft may be balanced - however no materials may be added (e.g. no heavy metal crank inserts) or removed (beyond balancing) and the components themselves must be standard parts as fitted to either the VVC, sport 160 or standard Elise K engines. If, in renewing the bottom end, any parts are replaced by new items - they must be the exact specification/profile and material of the original parts in the appropriate derivative. Forged pistons are permitted.
- 2.5.1.3.10. Heads are free but standard hydraulic tappets/followers must be retained and valve, valve guide, valve seat and valve spring dimensions limited to standard rover items as fitted to standard, VVC or VHPD heads.
- 2.5.1.3.11. Cams are free.
- 2.5.1.3.12. Heads may be ported and polished and intake manifold may be matched to the head.
- 2.5.1.3.13. Cams are free but standard hydraulic tappets/followers must be retained and valve and valve spring dimensions limited to standard rover items as fitted to standard, VVC or VHPD heads.
- 2.5.1.3.14. Vernier cam pulleys are permitted.
- 2.5.1.3.15. Air filters/induction is free up to the single throttle body.
- 2.5.1.3.16. Swept volume must remain standard (i.e. below 1800cc).
- 2.5.1.3.17. A Baffle may be fitted to the sump.
- 2.5.1.3.18. Addition of a water/oil or air/oil cooler is permitted.
- 2.5.1.3.19. Engine water cooling system is free (e.g. use of a remote thermostat, removal of cabin heater pipe work, up rated radiator, up rated cooling fans, up rated water pump)
- 2.5.1.3.20. Up rated engine, gearbox and clutch slave cylinder mounts are permitted.
- 2.5.1.3.21. Additional heat shielding may be added within the engine bay.
- 2.5.1.3.22. Alternator make is free but must be installed in standard position and working. Ducting or a fan may be added to the alternator but modification of bodywork or under tray is not permitted.
- 2.5.1.3.23. Crank accessory pulley is free.
- 2.5.1.3.24. Addition of a remote thermostat/PRRT is permitted.
- 2.5.1.3.25. Engine & Gear box oil coolers are permitted.
- 2.5.1.3.26. Lightweight flywheels are permitted but must retain the standard clutch mounts and starter ring.
- 2.5.1.3.27. Clutch must remain standard pattern (AP or other upgraded clutch are permitted if same type as OEM).
- 2.5.1.3.28. Throttle cable to pedal linkage, gear selector cables and clutch hose may be replaced by up rated versions and rerouted. Quick shift gear stick is also permitted.



2024 Lotus Cup Europe – Technical Regulations

- 2.5.1.4. **Suspensions:** **Production**
- 2.5.1.4.1. It is strongly recommended that all cars have upgraded rear toe link kits (A111D0127S or equivalent).
- 2.5.1.4.2. All wishbones/ ball-joints/uprights/bearings must be as standard. Elise S1 may use Elise S2 uprights and wheel bearings. Bushes may be replaced with non-standard parts, but spherical bearings/ball joints are not permitted.
- 2.5.1.4.3. Uprights and steering arms may be modified to achieve more camber.
- 2.5.1.4.4. Dampers may be changed for single way adjustable (no remote canister types) and may have either bushed or spherical joints. All parts must be fitted directly to the original mounting points with no adaptor parts other than changes in mounting bush sizes.
- 2.5.1.4.5. Spring rates are free including use of helper springs.
- 2.5.1.4.6. Front anti roll bar may be replaced by an uprated one using the same design and mounts to original. No additional anti roll bars can be added (i.e. rears etc)
- 2.5.1.4.7. Must retain original steering rack. Quicker ratio pinion is allowed.
- 2.5.1.4.8. Steering arms may be changed from OEM but must retain standard Ackermann and upright/wishbone mountings both physically and geometrically.
- 2.5.1.5. **Ride Height and Ground Clearance:** **Production**
- 2.5.1.5.1. See diagram 3.3 in appendices showing illustration of where ride height should be observed on the vehicle.
- 2.5.1.5.2. Ride height - no part of the car between all 4 wheel centres (excluding mud flaps) may be below 100mm.
- 2.5.1.5.3. Ground clearance - no part of the car (excluding mud flaps) should be below 80mm.
- 2.5.1.5.4. No cockpit or remote external suspension adjustment devices are permitted. No form of active suspension including magnetic dampers is permitted.
- 2.5.1.5.5. Ride height and ground clearance measurements will be taken whilst driver is in the vehicle.
- 2.5.1.6. **Transmission:** **Production**
- 2.5.1.6.1. Ratios are free but must be standard production item (after-market gear kits are not permitted).
- 2.5.1.6.2. LSD's are permitted.
- 2.5.1.7. **Electrics:** **Production**
- 2.5.1.7.1. As per Motorsport UK regulation J 5.14.1-7 (electrical systems).
- 2.5.1.7.2. Aftermarket and reprogrammed Engine Control Units (ECU) are permitted.
- 2.5.1.7.3. All ECU's must contain only one map.



2024 Lotus Cup Europe – Technical Regulations

- 2.5.1.7.4. If an aftermarket ECU is fitted drivers must make available to Series Eligibility Scrutineer the hardware and software required to interrogate the vehicles ECU. If this is not made available, the ECU may be sealed and the driver may not be permitted to race.
- 2.5.1.7.5. Battery size & type is free but must remain in the standard location and be capable of starting the car multiple times without external assistance.
- 2.5.1.7.6. Vehicle immobiliser and alarm system may be removed.
- 2.5.1.7.7. Original wiring looms may be modified to accept Motorsport UK/FIA approved/recommended safety equipment and other permitted electrical equipment including but not limited to ECU, lap timers, radio equipment, data loggers and pressure sensors.
- 2.5.1.7.8. All cars must be fitted with a series approved data logger.
- 2.5.1.8. **Brakes:** **Production**
- 2.5.1.8.1. Discs are free (steel or iron only – bells are free). However, the bell may not be thickened beyond 13mm.
- 2.5.1.8.2. Pads are free.
- 2.5.1.8.3. Calipers must remain standard (AP two pot fronts and Brembo sliding caliper rears).
- 2.5.1.8.4. Master cylinder must remain standard (single dual circuit item).
- 2.5.1.8.5. Brake flexible hoses are free (stainless steel braided recommended).
- 2.5.1.8.6. Fluid must be DOT 4 or 5.1.
- 2.5.1.8.7. Brake disk shields may be removed.
- 2.5.1.8.8. Ducting to the front brakes may be added but must not involve modification of bodywork.
- 2.5.1.9. **Wheels:** **Production**
- 2.5.1.9.1. The Elise S1 will be required to run Elise S2 wheel sizes as specified in 2.5.1.9.2.
- 2.5.1.9.2. Elise S2 (K series) max rim size front 7J16 min ET30 and rear 8J17 min ET18.
- 2.5.1.9.3. All Wheels must be of metal construction with the exception of the use of Magnesium wheels which are not permitted. Multi-piece wheels are not permitted.
- 2.5.1.9.4. Wheel spacers or any other method of changing the track of the vehicle are not permitted.
- 2.5.1.10. **Tyres:** **Production**
- 2.5.1.10.1. As supplied control tyre:
- Nankang CR-S
Series 1 & 2
195/50R16
225/45R17
- 2.5.1.10.2. No modifications to the tyres in any way, (any tyres suspected of being treated/modified will be excluded from the meeting).



2024 Lotus Cup Europe – Technical Regulations

2.5.1.10.3. It is not permitted to fill tyres with nitrogen.

2.5.1.10.4. Tyres must have not less than 1.6mm of tread remaining at the start of an event.

2.5.1.10.5. Tyres must be purchased from the official series supplier: Nankang Tire Netherlands B.V., Parkstraat 83,2514JG, Den Haag, The Netherlands or their approved supplier.

2.5.1.11. **Weights:** **Production**

2.5.1.11.1. Minimum weight of the vehicle including the driver is **790kg**.

2.5.1.11.2. This weight is the minimum the car and driver combined must be in race trim after either a race or qualifying session as defined in J 5.15.1-5 (weight/ballast).

2.5.1.11.3. It is forbidden to use ballast to make up the weight (as in no lightening of the car then ballasting them back up).

2.5.1.11.4. Success Ballast - Will be applied to drivers finishing 1st or 2nd in Production on the final classification in the first and second races at each race weekend. 1st place in a race will carry 20kg ballast, 2nd place 10kg ballast. Two 1st places will carry 40kg ballast, Two 2nd places will carry 20kg ballast while a 1st and 2nd place will carry 30kg. The ballast must be carried for qualifying and the first two races only at the following race weekend that the driver takes part in qualifying. The entire success ballast must be carried regardless of the weight combination of vehicle and driver. Ballast will be supplied by LoTRDC Ltd and must be securely bolted into the existing passenger seat mounts of the car.

2.5.1.11.5. Cars may have additional weight added to their minimum weights depending on vehicle specification. Current penalties are detailed in section 3.1.1.

2.5.1.12. **Fuel Tank/Fuel:** **Production**

2.5.1.12.1. Fuel must comply with Art 252, Art 9.

2.5.1.12.2. The fuel tank will comply with FT3-1999 as a minimum standard.

2.5.1.12.3. Fuel lines are free.

2.5.1.12.4. The ProAlloy motorsport fuel filler neck assembly – part number LOTRDC001 is permitted.

2.5.1.12.5. All cars must have a minimum of 3L of fuel remaining in the tank at race finish.

2.5.1.12.6. Charcoal canister may be removed but a one way or rollover valve, venting to a safe area, must be fitted.

2.5.2. **Series 2 Elise and Exige with Toyota Engines**

2.5.2.1. **Chassis:** **Production**

2.5.2.1.1. The construction type, design and material must remain as standard. This includes the sub frame.

2.5.2.1.2. No additional bracing/supports can be added with exception of a rear chassis brace kit (LOTAC05377).

2.5.2.2. **Bodywork:** **Production**



2024 Lotus Cup Europe – Technical Regulations

- 2.5.2.2.1. All cars must retain the standard road car's profile, and be maintained to a high standard of finish, whilst it's understandable that damage may occur during a weekend, it's important that this is rectified before the next meeting. This is important to keep the image and profile of the series.
- 2.5.2.2.2. All body panels must remain as standard production in size, shape, profile and material (i.e. Pre-preg GRP, Kevlar and Carbon fibre are not permitted).
- 2.5.2.2.3. Exige and 111R S2 must remain as standard including, but not limited to, all body panels.
- 2.5.2.2.4. Front and rear clamshells may be modified solely for the purpose of ease of removal. No other changes are permitted.
- 2.5.2.2.5. Interior must remain as standard with the exception of required items to meet FIA regulations. The passenger seat may be removed. The following items may also be removed; carpets, roof lining, coin tray, rear speaker pods, sun visors, sill pads, passenger foot rest, dashboard infill panels, handbrake cover and gear lever cover.
- 2.5.2.2.6. Steering wheel and steering wheel bosses may be replaced with a suitable FIA compliant alternative.
- 2.5.2.2.7. Glass must remain as E marked glass with the exception of the rear screen which may be replaced with a polycarbonate version. Glass side windows must be covered in an anti-shatter film.
- 2.5.2.2.8. Front windows can be replaced with Polycarbonate alternative. However, it is clearly understood that if the organisers ask for the window to be replaced due to its condition or quality this must be accepted or a Glass window as referred to in 2.4.2.2.7 must be fitted.
- 2.5.2.2.9. Side windows can be replaced with Polycarbonate or Perspex alternatives, this can include sliders. Broken or damaged windows will not be permitted.
- 2.5.2.2.10. An appropriate red warning light must be fitted to comply with FIA regulations.
- 2.5.2.2.11. Supplementary gauges may be added such as oil temperature and pressure.
- 2.5.2.2.12. There should be substantial towing eyes securely fixed to the main structure of the vehicle, front and rear, within the confines of the body to enable the vehicle to be moved. Towing eyes should have a minimum internal diameter of 60mm. Towing eyes/towing points should be painted a contrasting bright color (Day-Glo red, orange or yellow). Q 19.1.3
- 2.5.2.2.13. Headlamps, front direction indicators and side repeaters including associated mountings may be removed and replaced by a cover in the original profile. However, if all front lights are removed two driving lamps must be fitted and be in effective working condition.
- 2.5.2.3. **Engine:** **Production**
 - 2.5.2.3.1. Must not exceed a maximum power output of 190bhp at the hubs. LoTRDC may adjust the max power by giving two weeks' notice before any round.
 - 2.5.2.3.2. The power limit must be strictly adhered too – LoTRDC will require cars to be power tested before and during the season as directed.
 - 2.5.2.3.3. As per Motorsport UK regulations including J 5.4.1-3 (engines), J 5.10.1-2 (cooling), J 5.12.1 (oil systems), J 5.13.1-7 (fuel systems).



2024 Lotus Cup Europe – Technical Regulations

- 2.5.2.3.4. No engine modifications permitted including but not limited to airbox with the exception of the exhaust manifold, exhaust system, silencer and air filter and housing which may be changed and a baffled sump which is permitted. The vehicle should remain as standard.
- 2.5.2.3.5. Alternator make is free but must be installed in standard position and working. Ducting or a fan may be added to the alternator but modification of bodywork or under tray is not permitted.
- 2.5.2.3.6. Additional heat shielding may be added within the engine bay.
- 2.5.2.3.7. Motorsport UK regulations should be observed as 5.1.
- 2.5.2.4. **Suspensions:** **Production**
- 2.5.2.4.1. It is strongly recommended that all cars have upgraded rear toe link kits (A111D0127S or equivalent). It is recommended that cars are additionally fitted with rear chassis brace kit (LOTAC05377).
- All wishbones/ ball-joints/uprights/bearings must be as standard. Bushes may be replaced with non-standard parts, but spherical bearings/ball joints are not permitted.
- 2.5.2.4.2. Uprights and steering arms may be modified to achieve more camber.
- 2.5.2.4.3. Dampers may be changed for single way adjustable (no remote canister types) and may have either bushed or spherical joints. All parts must be fitted directly to the original mounting points with no adaptor parts other than changes in mounting bush sizes.
- 2.5.2.4.4. Spring rates are free including use of helper springs.
- 2.5.2.4.5. Front anti roll bar may be replaced by an updated one using the same design and mounts to original. No additional anti roll bars can be added (i.e. rears etc)
- 2.5.2.4.6. Must retain original steering rack. Quicker ratio pinion is allowed.
- 2.5.2.4.7. Steering arms may be changed from OEM but must retain standard Ackermann and upright/wishbone mountings both physically and geometrically.
- 2.5.2.5. **Ride Height and Ground Clearance:** **Production**
- 2.5.2.5.1. See diagram 3.3 in appendices showing illustration of where ride height should be observed on the vehicle.
- 2.5.2.5.2. Ride height - no part of the car between all 4 wheel centres (excluding mud flaps) may be below 100mm.
- 2.5.2.5.3. Ground clearance - no part of the car (excluding mud flaps) should be below 80mm.
- 2.5.2.5.4. Ride height and ground clearance measurements will be taken whilst driver is in the vehicle.
- 2.5.2.5.5. No cockpit or remote external suspension adjustment devices are permitted. No form of active suspension including magnetic dampers is permitted.
- 2.5.2.6. **Transmission:** **Production**
- 2.5.2.6.1. No transmission modifications permitted including but not limited to gearbox (including gear ratios). Gear box oil coolers are permitted.
- 2.5.2.6.2. LSDs are permitted.



2024 Lotus Cup Europe – Technical Regulations

2.5.2.7. **Electrics:**

Production

- 2.5.2.7.1. As per Motorsport UK regulation J 5.14.1-7 (electrical systems).
- 2.5.2.7.2. Aftermarket and reprogrammed Engine Control Units (ECU) are permitted.
- 2.5.2.7.3. Battery size & type is free but must remain in the standard location and be capable of starting the car multiple times without external assistance.
- 2.5.2.7.4. Aftermarket wiring looms are permitted. Original wiring looms may be modified to accept Motorsport UK/FIA approved/recommended safety equipment and other permitted electrical equipment including but not limited to lap timers, radio equipment, data loggers and pressure sensors.
- 2.5.2.7.5. All cars must be fitted with a series approved data logger.

2.5.2.8. **Brakes:**

Production

- 2.5.2.8.1. Discs are free (steel or iron only – bells are free). However, the bell may not be thickened beyond 13mm.
- 2.5.2.8.2. Pads are free.
- 2.5.2.8.3. Calipers must remain standard (AP two pot fronts and Brembo sliding caliper rears).
- 2.5.2.8.4. Master cylinder must remain standard (single dual circuit item).
- 2.5.2.8.5. Brake flexible hoses are free (stainless steel braided recommended).
- 2.5.2.8.6. Fluid must be DOT 4 or 5.1.

2.5.2.9. **Wheels:**

Production

- 2.5.2.9.1. Max rim size front 7J16 min ET30 and rear 8J17 min ET35.
- 2.5.2.9.2. All Wheels must be of metal construction with the exception of the use of Magnesium wheels which are not permitted. Multi-piece wheels are not permitted.
- 2.5.2.9.3. Wheel spacers or any other method of changing the track of the vehicle are not permitted.

2.5.2.10. **Tyres:**

Production

- 2.5.2.10.1. As supplied control tyre:

Nankang CR-S
195/50R16
225/45R17

- 2.5.2.10.2. No modifications to the tyres in any way, (any tyres suspected of being treated/modified will be excluded from the meeting).
- 2.5.2.10.3. It is not permitted to fill tyres with nitrogen.
- 2.5.2.10.4. Tyres must have not less than 1.6mm of tread remaining at the start of an event.
- 2.5.2.10.5. Tyres must be purchased from the official series supplier: Nankang Tire Netherlands B.V., Parkstraat 83,2514JG, Den Haag, The Netherlands or their approved supplier.



2024 Lotus Cup Europe – Technical Regulations

2.5.2.11. **Weights:**

Production

- 2.5.2.11.1. Minimum weight of the Elise 111r cars including the driver is **885kg**.
- 2.5.2.11.2. Minimum weight of the Exige cars including the driver is **900kg**.
- 2.5.2.11.3. This weight is the minimum the car and driver combined must be in race trim after either a race or qualifying session as defined in J 5.15.1-5 (weight/ballast).
- 2.5.2.11.4. It is forbidden to use ballast to make up the weight (as in no lightening of the car then ballasting them back up).
- 2.5.2.11.5. Success Ballast - Will be applied to drivers finishing 1st or 2nd in Production on the final classification in the first and second races at each race weekend. 1st place in a race will carry 30kg ballast, 2nd place 15kg ballast. Two 1st places will carry 60kg ballast, Two 2nd places will carry 30kg ballast while a 1st and 2nd place will carry 45kg. The ballast must be carried for qualifying and the first two races only at the following race weekend that the driver takes part in qualifying. The entire success ballast must be carried regardless of the weight combination of vehicle and driver. Ballast will be supplied by the driver and must be securely bolted into the existing passenger seat mounts of the car.
- 2.5.2.11.6. Cars will have additional weight added to their minimum weights depending on vehicle specification. Current penalties are detailed in section 3.1.1.

2.5.2.12. **Fuel Tank/Fuel:**

Production

- 2.5.2.12.1. Fuel must comply with Art 252, Art 9
- 2.5.2.12.2. The fuel tank will comply with FT3-1999 as a minimum standard.
- 2.5.2.12.3. All cars must have a minimum of 3L of fuel remaining in the tank at race finish.
- 2.5.2.12.4. The ProAlloy motorsport fuel filler neck assembly – part number LOTRDC001 is permitted.
- 2.5.2.12.5. Charcoal canister may be removed but a one way or rollover valve, venting to a safe area, must be fitted.

2.5.3. **Series 3 Elise with Toyota Supercharged Engines**

2.5.3.1. **Chassis:**

Production

- 2.5.3.1.1. The construction type, design and material must remain as standard. This includes the sub frame.
- 2.5.3.1.2. No additional bracing/supports can be added with exception of a rear chassis brace kit (LOTAC05377).

2.5.3.2. **Bodywork:**

Production

- 2.5.3.2.1. All cars must retain the standard road car's profile, and be maintained to a high standard of finish, whilst it's understandable that damage may occur during a weekend, it's important that this is rectified before the next meeting. This is important to keep the image and profile of the series.
- 2.5.3.2.2. All body panels must remain as standard production in size, shape, profile and material.



2024 Lotus Cup Europe – Technical Regulations

- 2.5.3.2.3. Front and rear clamshells may be modified solely for the purpose of ease of removal. No other changes are permitted.
- 2.5.3.2.4. Elise S3 must remain as standard including, but not limited to, all body panels. The Lotus Racing body kit or the Elise-Shop body kit part no. LOTRDCES1 is permitted on all versions of the Elise S3, cup or not. The front spoiler, barge boards, diffuser and rear spoiler that are part of these body kits can be run individually or as the full kit. Where the alternative Elise-Shop kit is used the individual parts must be of the profile, size and weight of the original kit.
- 2.5.3.2.5. Interior must remain as standard with the exception of required items to meet FIA regulations. The passenger seat may be removed. The following items may also be removed; carpets, coin tray, speaker pods, sun visors, sill pads, passenger foot rest, dashboard infill panels, handbrake cover and gear lever cover.
- 2.5.3.2.6. Steering wheel and steering wheel bosses may be replaced with a suitable FIA compliant alternative.
- 2.5.3.2.7. Glass must remain as E marked glass with the exception of the rear screen which may be replaced with a polycarbonate version. Glass side windows must be covered in an anti-shatter film.
- 2.5.3.2.8. Front windows can be replaced with Polycarbonate alternative. However, it is clearly understood that if the organisers ask for the window to be replaced due to its condition or quality this must be accepted or a Glass window as referred to in 2.4.3.2.7 must be fitted.
- 2.5.3.2.9. Side windows can be replaced with Polycarbonate or Perspex alternatives, this can include sliders. Broken or damaged windows will not be permitted.
- 2.5.3.2.10. An appropriate red warning light must be fitted to comply with FIA regulations.
- 2.5.3.2.11. Supplementary gauges may be added such as oil temperature and pressure.
- 2.5.3.2.12. There should be substantial towing eyes securely fixed to the main structure of the vehicle, front and rear, within the confines of the body to enable the vehicle to be moved. Towing eyes should have a minimum internal diameter of 60mm. Towing eyes/towing points should be painted a contrasting bright color (Day-Glo red, orange or yellow). Q 19.1.3
- 2.5.3.2.13. Headlamps, front direction indicators and side repeaters including associated mountings may be removed and replaced by a cover in the original profile. However, if all front lights are removed two driving lamps must be fitted and be in effective working condition.
- 2.5.3.3. **Engine:** **Production**
- 2.5.3.3.1. Must not exceed a maximum power output of 205bhp at the hubs. LoTRDC may adjust the max power by giving two weeks' notice before any round.
- 2.5.3.3.2. The power limit must be strictly adhered too – LoTRDC will require cars to be power tested before and during the season as directed.
- 2.5.3.3.3. As per Motorsport UK regulations including J 5.4.1-3 (engines), J 5.10.1-2 (cooling), J 5.12.1 (oil systems), J 5.13.1-7 (fuel systems).
- 2.5.3.3.4. No engine modifications permitted from that supplied by the factory including but not limited to the exhaust system with the exception of the exhaust silencer, air filter and housing which may be changed and a baffled sump which is permitted. The vehicle should remain as standard.



2024 Lotus Cup Europe – Technical Regulations

- 2.5.3.3.5. Additional heat shielding may be added within the engine bay.
- 2.5.3.3.6. Motorsport UK regulations should be observed as 5.1.
- 2.5.3.4. **Suspensions:** **Production**
- 2.5.3.4.1. It is strongly recommended that all cars have upgraded rear toe link kits (A111D0127S or equivalent). It is recommended that cars are additionally fitted with rear chassis brace kit (LOTAC05377).
- 2.5.3.4.2. All wishbones/bushes/ball-joints/ bearings must be as standard.
- 2.5.3.4.3. Uprights may be modified to achieve more camber.
- 2.5.3.4.4. Dampers may be changed for single way adjustable (no remote canister types) and may have either bushed or spherical joints. All parts must be fitted directly to the original mounting points with no adaptor parts other than changes in mounting bush sizes.
- 2.5.3.4.5. Spring rates are free including use of helper springs.
- 2.5.3.4.6. Front anti roll bar may be replaced by an uprated one using the same design and mounts to original. No additional anti roll bars can be added (i.e. rears etc)
- 2.5.3.4.7. Must retain original steering rack. Quicker ratio pinion is allowed.
- 2.5.3.4.8. Steering arms may be changed from OEM but must retain standard ackerman and upright/wishbone mountings both physically and geometrically.
- 2.5.3.5. **Ride Height and Ground Clearance:** **Production**
- 2.5.3.5.1. See diagram 3.3 in appendices showing illustration of where ride height should be observed on the vehicle.
- 2.5.3.5.2. Ride height - no part of the car between all 4 wheel centres (excluding mud flaps) may be below 100mm.
- 2.5.3.5.3. Ground clearance - no part of the car (excluding mud flaps) should be below 80mm.
- 2.5.3.5.4. Ride height and ground clearance measurements will be taken whilst driver is in the vehicle.
- 2.5.3.5.5. No cockpit or remote external suspension adjustment devices are permitted. No form of active suspension including magnetic dampers is permitted.
- 2.5.3.6. **Transmission:** **Production**
- 2.5.3.6.1. No transmission modifications permitted including but not limited to gearbox (including gear ratios). Gear box oil coolers are permitted.
- 2.5.3.6.2. LSDs are permitted.
- 2.5.3.7. **Electrics:** **Production**
- 2.5.3.7.1. As per Motorsport UK regulation J 5.14.1-7 (electrical systems).
- 2.5.3.7.2. Aftermarket and reprogrammed Engine Control Units (ECU) are not permitted with the exception of the Series Control ECU's and control engine calibrations which are optional (Part number RRR2019d). Competitors using this ECU will not have access to the calibration and agree to the ECU being locked by the series organiser or their partner.



2024 Lotus Cup Europe – Technical Regulations

- 2.5.3.7.3. RRR pit lane speed limiter &/or RRR launch control are permitted.
- 2.5.3.7.4. The Licenced Eligibility scrutineer may reflash an approved factory calibration at the competitor's risk at any point during a race meeting.
- 2.5.3.7.5. The organisers may swap ECU's between cars in this class or supply a standard ECU for fitment at their discretion.
- 2.5.3.7.6. Battery size & type is free but must remain in the standard location and be capable of starting the car multiple times without external assistance.
- 2.5.3.7.7. Original wiring looms may be modified to accept Motorsport UK/FIA approved/recommended safety equipment and other permitted electrical equipment including but not limited to lap timers, radio equipment, data loggers and pressure sensors.
- 2.5.3.7.8. All cars must be fitted with a series approved data logger.
- 2.5.3.8. **Brakes:** **Production**
- 2.5.3.8.1. Discs are free (steel or iron only – bells are free). However, the bell may not be thickened beyond 13mm.
- 2.5.3.8.2. Pads are free.
- 2.5.3.8.3. Calipers must remain standard (AP two pot fronts and Brembo sliding caliper rears).
- 2.5.3.8.4. Master cylinder must remain standard (single dual circuit item).
- 2.5.3.8.5. Brake flexible hoses are free (stainless steel braided recommended).
- 2.5.3.8.6. Fluid must be DOT 4 or 5.1.
- 2.5.3.9. **Wheels:** **Production**
- 2.5.3.9.1. Max rim size front 7J16 min ET30 and rear 8J17 min ET35.
- 2.5.3.9.2. All Wheels must be of metal construction with the exception of the use of Magnesium wheels which are not permitted. Multi-piece wheels are not permitted.
- 2.5.3.9.3. Wheel spacers or any other method of changing the track of the vehicle are not permitted.
- 2.5.3.10. **Tyres:** **Production**
- 2.5.3.10.1. As supplied control tyre:
- Nankang CR-S
195/50R16
225/45R17
- 2.5.3.10.2. No modifications to the tyres in any way, (any tyres suspected of being treated/modified will be excluded from the meeting).
- 2.5.3.10.3. It is not permitted to fill tyres with nitrogen.
- 2.5.3.10.4. Tyres must have not less than 1.6mm of tread remaining at the start of an event.



2024 Lotus Cup Europe – Technical Regulations

2.5.3.10.5. Tyres must be purchased from the official series supplier: Nankang Tire Netherlands B.V., Parkstraat 83,2514JG, Den Haag, The Netherlands or their approved supplier.

2.5.3.11. **Weights:** **Production**

2.5.3.11.1. Minimum weight of the Elise S3 cars including the driver is **975kg**.

2.5.3.11.2. This weight is the minimum the car and driver combined must be in race trim after either a race or qualifying session as defined in J 5.15.1-5 (weight/ballast).

2.5.3.11.3. It is forbidden to use ballast to make up the weight (as in no lightening of the car then ballasting them back up).

2.5.3.11.4. Success Ballast - Will be applied to drivers finishing 1st or 2nd in Production on the final classification in the first and second races at each race weekend. 1st place in a race will carry 30kg ballast, 2nd place 15kg ballast. Two 1st places will carry 60kg ballast, Two 2nd places will carry 30kg ballast while a 1st and 2nd place will carry 45kg. The ballast must be carried for qualifying and the first two races only at the following race weekend that the driver takes part in qualifying. The entire success ballast must be carried regardless of the weight combination of vehicle and driver. Ballast will be supplied by the driver and must be securely bolted into the existing passenger seat mounts of the car.

2.5.3.11.5. Cars will have additional weight added to their minimum weights depending on vehicle specification. Current penalties are detailed in section 3.1.1.

2.5.3.12. **Fuel Tank/Fuel:** **Production**

2.5.3.12.1. Fuel must comply with Art 252, Art 9

2.5.3.12.2. The fuel tank will comply with FT3-1999 as a minimum standard.

2.5.3.12.3. All cars must have a minimum of 3L of fuel remaining in the tank at race finish.

2.5.3.12.4. The ProAlloy motorsport fuel filler neck assembly – part number LOTRDC001 is permitted.

2.5.3.12.5. Charcoal canister may be removed but a one way or rollover valve, venting to a safe area, must be fitted.

2.6. Group: 2-Eleven & Open (2110)

2.6.1. Chassis (211 only): **2-Eleven**



2024 Lotus Cup Europe – Technical Regulations

- 2.6.1.1. The construction type, design and material must remain as standard. This includes the sub frame.
- 2.6.1.2. No additional bracing/supports can be added, including any stiffening of the rear sub frame. No method of adding stiffness to the chassis and/or subframe is permitted. Only the use of Lotus manufactured and supplied rear track control arm and structural under tray kit (both types) is permitted. The under tray may be modified to allow access to alternative sequential gear boxes. Provided it is solely for the purpose of access and not for increased stiffness/performance.
- 2.6.1.3. It is recommended that cars are fitted with full GT4 specification roll cage. Part Number – A127A0058F
- 2.6.2. Bodywork (211 only):** **2-Eleven**
- 2.6.2.1. All cars must retain the standard road car's profile, and be maintained to a high standard of finish, whilst it's understandable that damage may occur during a weekend, it's important that this is rectified before the next meeting. This is important to keep the image and profile of the series.
- 2.6.2.2. Vehicles must be fitted with standard Lotus supplied bodywork or non-OEM bodywork of the same external dimensions and material of the lotus supplied part.
- 2.6.2.3. Interior is free. This includes but is not limited to dashes and the positioning of switches.
- 2.6.2.4. Battery size & type is free and can be moved as long as it is securely mounted and covered.
- 2.6.2.5. A removable steering wheel may be fitted to replace standard component, a spacer may be used.
- 2.6.2.6. The passenger seat, mounts and seatbelts may be removed.
- 2.6.2.7. The windscreen may be modified or removed to aid vision. The original rigid tonneau cover can be replaced by a replacement of the same external dimensions of the original.
- 2.6.2.8. There should be substantial towing eyes securely fixed to the main structure of the vehicle, front and rear, within the confines of the body to enable the vehicle to be moved. Towing eyes should have a minimum internal diameter of 60mm. Towing eyes/towing points should be painted a contrasting bright color (Day-Glo red, orange or yellow).
Q19.1.3
- 2.6.2.9. Carbon fibre front clamshell, body sides, rear bumper are not permitted all other panels are free.
- 2.6.2.10. All body grills may be removed. If removing side intake grills the body work may be fettled to no less than the material thickness of the panel.
- 2.6.2.11. Plastic arch liners may be added for protection to inner wheel arch.
- 2.6.2.12. Lotus Aero Pack comprising adjustable carbon fibre single element rear wing, wing end plates for which material is free but must remain to the original dimensions and extended front splitter is permitted. No modification, including but not limited to the mounting points, the wing or splitter, be it standard or Aero Pack, is permitted. If fitted wing end plates must be a minimum of 10mm thick with a maximum thickness of 30mm, with rounded corners.
- 2.6.2.13. All vehicles must be fitted with rear view side mirrors.



2024 Lotus Cup Europe – Technical Regulations

- 2.6.2.14. All vehicles must be fitted with Lotus 2-Eleven brake lights and rear fog lights (the latter complying with FIA regulations).
- 2.6.2.15. Headlamps, front direction indicators and side repeaters including associated mountings are optional. However, if all front lights are removed two driving lamps must be fitted and be in effective working condition.
- 2.6.2.16. The front 'side ducts' may be blanked for improved aerodynamics.
- 2.6.2.17. A hose ducting fresh air from the front and rear of the vehicle to the front and rear brakes is permitted however no external bodywork modification are permitted to achieve this.
- 2.6.2.18. Front and rear clamshells may be modified solely for the purpose of ease of removal. No other changes are permitted.
- 2.6.2.19. A front gurney of 20mm maximum height can be added around front edge of radiator outlet. A gurney may also be added to the rear wing with a maximum height of 20mm.
- 2.6.2.20. The rear wing height must not exceed 1100mm measured from the ground to the top of the wing including a gurney if fitted. (excluding end plates).

2.6.3. Engine (211 only): **2 Eleven**

- 2.6.3.1. No engine modification is permitted including, but not limited to, engine control unit mapping and engine internal components.
- 2.6.3.2. Exhaust silencer is free.
- 2.6.3.3. Exhaust manifolds are restricted to the standard 211 part reference A120E6331S or the GT4 upgrade manifold part number ALS3E0281F.
- 2.6.3.4. Lotus 2-ELEVEN 260PS ECM upgrade is permitted, part number "ALS3M0352F ECM, 260PS UPGRADE, 2-ELEVEN". The Lotus 270 GT4 upgrade (comprising GT4 ECU, GT4 pulley and GT4 exhaust manifold) is permitted but cars must not exceed the stated maximum power in 2.6.3.5. The organisers may swap ECU's between cars in this class or supply a standard ECU for fitment at their discretion.
- 2.6.3.5. Vehicle power is limited to 250bhp at the hubs. LoTRDC may adjust the max power by giving two weeks' notice before any round.
- 2.6.3.6. The power limit must be strictly adhered too – LoTRDC will require cars to be power tested before and during the season as directed.
- 2.6.3.7. The compressor pulley must not be smaller than 76.5mm measured from the outer teeth to outer teeth – see Appendix 3.5 and must not be modified in any way.
- 2.6.3.8. The crank shaft pulley must be the standard Lotus part reference A120E6198S and must not be modified in any way.
- 2.6.3.9. The addition of a heat resistant gasket between the supercharger and manifold is permitted part number LOTRDCHRG211. The manifold or supercharger can be machined an equivalent amount to offset the additional thickness of the gasket.
- 2.6.3.10. Vehicles may be fitted with an additional oil temperature and pressure gauge.
- 2.6.3.11. Air filter and housing is free.



2024 Lotus Cup Europe – Technical Regulations

- 2.6.3.12. Vehicles may be fitted with the Lotus supplied Twin Air/Oil Coolers. Laminova oil coolers for gear box and engine are permitted. A baffled sump is permitted.
- 2.6.3.13. Lotus supplied lightweight fly wheel is permitted.
- 2.6.3.14. Mesh may be added to front and rear of Air/Oil cooler.
- 2.6.3.15. Additional heat shielding may be added within the engine bay.
- 2.6.3.16. Internal ducting of the Intercooler pipework and shroud may be modified to direct external air through the intercooler cooling fins.
- 2.6.3.17. A Dry Sump System may be fitted.
- 2.6.3.18. Lotus engine mount upgrade is permitted, part numbers:
 - ALS3E0264F Engine Mount, Front, Bush, Upgrade
 - ALS3E0265F Engine Mount, Rear, Bush, Upgrade

2.6.4. Suspensions (211 only): **2-Eleven**

- 2.6.4.1. Damper make is free but may only be a maximum of two way adjustable.
- 2.6.4.2. Front damper brackets to the chassis may be replaced by the Lotus adjustable mount to raise or lower the upper damper mounting point.
- 2.6.4.3. Springs are free including the use of helper springs.
- 2.6.4.4. Vehicles may be fitted with polyurethane or nylatron suspension bushes.
- 2.6.4.5. Upgraded inner rear toe links may be fitted however mounting points must be the same as standard.
- 2.6.4.6. The Front Anti-Roll Bar and related components for mounting are free however no modifications are permitted to the chassis, uprights or wishbones to aid fitting. The Anti-Roll Bar may only be adjusted mechanically and for clarity may not be cockpit adjustable or electronically adjustable. No Rear Anti-Roll Bar is permitted.

2.6.5. Ride Height and Ground Clearance (211 only): **2-Eleven**

- 2.6.5.1. See diagram 3.3 in appendices showing illustration of where ride height should be observed on the vehicle.
- 2.6.5.2. No part of the car between all 4 wheel centres (excluding mud flaps) may be below 85mm.
- 2.6.5.3. No part of the car (excluding mud flaps) should be below 65mm.
- 2.6.5.4. Ride height and ground clearance measurements will be taken whilst driver is in the vehicle.
- 2.6.5.5. No cockpit or remote external suspension adjustment devices are permitted. No form of active suspension including magnetic dampers is permitted.

2.6.6. Transmission (211 only): **2-Eleven**

- 2.6.6.1. Any modification is prohibited, with the exception of fitment of the Lotus or third-party clutch and third party optional gear sets.



2024 Lotus Cup Europe – Technical Regulations

- 2.6.6.2. An alternative sequential gearbox with 6 gears may be fitted in replacement to the original gearbox. A 30kg weight penalty will be applied for all cars fitted with a sequential gearbox. Paddle shifts are permitted.
- 2.6.6.3. A gearbox oil cooler is permitted.
- 2.6.6.4. Engine mounts that fit to the gearbox may be changed to accommodate the gearbox. No lowering of the engine or gearbox is permitted. The right-hand engine mount must remain as standard.
- 2.6.6.5. Gearshift mechanism can be replaced but must remain a mechanical H-pattern shift and retain the standard connection at the gearbox and must not include any electronic shifting mechanism.
- 2.6.6.6. LSDs are permitted.
- 2.6.7. Electrics (211 only):** **2-Eleven**
- 2.6.7.1. Any modification is prohibited with the exception of modifications required for fitment of a battery isolation switch (mechanical or electrical type), Lotus supplied Anderson Plug External Connector and Cables, Accusump oil accumulator and associated wiring, fire extinguisher, FIA fuel drain, sensor for oil pressure/temperature and fuel pressure. Modifications can also be made to aid moving the battery.
- 2.6.7.2. A pit lane speed limiter is permitted.
- 2.6.7.3. All cars must be fitted with a series approved data logger.
- 2.6.8. Brakes (211 only):** **2-Eleven**
- 2.6.8.1. Disks are free (steel or iron only – bells are free). However, the bell may not be thickened beyond 13mm.
- 2.6.8.2. Pads are free.
- 2.6.8.3. Fluid must be DOT 4 or 5.1.
- 2.6.8.4. Callipers are free, but a maximum of 4 pistons on the front callipers and 2 pistons on the rear. No modifications are permitted to the hubs, up rights, steering arms or camber blocks.
- 2.6.8.5. The use of Twin Master Cylinder Braking system ALS3J0174F is permitted and recommended for those wishing to disable the ABS system.
- 2.6.9. Wheels (211 only):** **2-Eleven**
- 2.6.9.1. Max rim size front 7J16 min ET30 and rear 8J17 min ET35.
- 2.6.9.2. All Wheels must be of metal construction with the exception of the use of Magnesium wheels which are not permitted. Multi-piece wheels are not permitted.
- 2.6.9.3. Wheel spacers or any other method of changing the track of the vehicle is prohibited.
- 2.6.9.4. No centre lock wheels are permitted.
- 2.6.10. Tyres (211 only):** **2-Eleven**
- 2.6.10.1. As supplied control tyre:



2024 Lotus Cup Europe – Technical Regulations

Nankang CR-S
195/50R16
225/45R17

- 2.6.10.2. No modifications to the tyres in any way, (any tyres suspected of being treated/modified will be excluded from the meeting).
- 2.6.10.3. It is not permitted to fill tyres with nitrogen.
- 2.6.10.4. Tyres must have not less than 1.6mm of tread remaining at the start of an event.
- 2.6.10.5. Tyres must be purchased from the official series supplier: Nankang Tire Netherlands B.V., Parkstraat 83,2514JG, Den Haag, The Netherlands or their approved supplier.
- 2.6.11. Weights (211 only):** **2-Eleven**
- 2.6.11.1. Minimum weight of the vehicle including the driver is **815kg**.
- 2.6.11.2. This weight is the minimum the car and driver combined must be in race trim after either a race or qualifying session as defined in J 5.15.1-5 (weight/ballast).
- 2.6.11.3. It is forbidden to use ballast to make up the weight (as in no lightening of the car then ballasting them back up).
- 2.6.11.4. Ballast may only be applied under direction from LoTRDC and where required shall be securely fixed in accordance with J 5.15.1-5.
- 2.6.11.5. Individual cars will have additional weight added to their minimum weights depending on vehicle specification. Current penalties are detailed in section 3.1.1.
- 2.6.12. Fuel Tank/Fuel (211 only):** **2-Eleven**
- 2.6.12.1. Fuel must comply with Art 252, Art 9
- 2.6.12.2. The fuel tank will comply with FT3-1999 as a minimum standard.
- 2.6.12.3. All cars must have a minimum of 3L of fuel remaining in the tank at race finish.
- 2.6.12.4. The Pro Alloy motorsport fuel filler neck assembly – part number LoTRDC001 is permitted.
- 2.6.13. Chassis (Open only):** **Lotus Open**
- 2.6.13.1. The construction type, design and material must remain as standard. This includes the sub frame.
- 2.6.13.2. No additional bracing/supports can be added, including any stiffening of the rear sub frame. No method of adding stiffness to the chassis and/or subframe is permitted. Only the use of Lotus manufactured and supplied rear track control arm and structural under tray kit (both types) is permitted.
- 2.6.14. Bodywork & Interior (Open only):** **Lotus Open**
- 2.6.14.1. All cars must retain the standard road car's profile, and be maintained to a high standard of finish, whilst it's understandable that damage may occur during a weekend, it's important that this is rectified before the next meeting. This is important to keep the image and profile of the series.



2024 Lotus Cup Europe – Technical Regulations

- 2.6.14.2. Vehicles must be fitted with standard Lotus supplied bodywork or non-OEM bodywork of the same external dimensions and material of the lotus supplied part.
- 2.6.14.3. *Permitted body modifications are:*
- 2.6.14.3.1. Front splitters may be fitted within the width of the bodywork, (excluding wing mirrors) and may project a maximum of 30mm beyond the bodywork and follow in plain view the profile of the front clamshell including original splitter. The original front splitter may be removed. An additional front spoiler as shown in section 3.4 may also be fitted but must also comply with ground clearance rules in 2.5.5. Material is free.
- 2.6.14.3.2. Undertrays must not exceed overall dimensions of the standard part. Ducts and holes within the tray may be relocated and material is free. No additional fins allowed on undertray. Flat floor/side skirts to a maximum width of 168cm between the wheels.
- 2.6.14.3.3. Extended rear diffuser protruding no more than 80mm from the periphery of the rear bodywork and complying with the ground clearance rules in 2.9.5 are permitted. Material is free.
- 2.6.14.3.4. S1 Elise 'Sport 160' style rear wing or a single element rear wing may be fitted to the maximum width of 1400mm (maximum of 1300mm on Exige S2) and have a maximum rear dimension not exceeding the original length of the car excluding any diffuser. All parts of the wing must be below 1200mm (1100mm on Exige S2) measuring from the ground to the highest point of the wing and have a maximum cord length of 300mm. End plates are allowed (one each end) but must be no larger than 320x200mm with rounded corners and a minimum thickness of 10mm and maximum thickness of 30mm, max of 20mm gurney also allowed. Material is free.
- 2.6.14.3.5. Side scoops may be fitted, but must not protrude further than the side profile of the car (not including any additional side skirts). Material is free. Side scoop inner vents may be removed but the external holes in the clam must be standard size and profile.
- 2.6.14.3.6. A "boost tube" is permitted on 340r cars. Material is free.
- 2.6.14.3.7. A "roof scoop" is permitted. Material is free.
- 2.6.14.3.8. The clam under rear grills (fog and reverse lights) may be removed however the grill must remain.
- 2.6.14.3.9. The body behind the number plate can be removed to an area not in excess of 520mm x 130mm allowing a standard number plate to be affixed.
- 2.6.14.3.10. On the Exige S2, Elise S2 & Elise S3 a hole may be cut in the rear clam between the two inner rear lights. The rear exhaust grills and number plate plinth may be removed. If a hole is created it must be covered in mesh.
- 2.6.14.3.11. Carbon fibre body panels are permitted where Lotus currently provide a factory option.
- 2.6.14.3.12. Wheel arch liners may be removed and the inner lip of the wheel arch reduced to allow tyre clearance.
- 2.6.14.3.13. The boot/engine bay divider may be removed or modified.
- 2.6.14.3.14. Rear bulkhead may be removed and replaced with a solid metallic sheet. It is essential that this is carried out in such a way that the passenger cabin is sealed from the engine compartment.
- 2.6.14.3.15. Front 'ducts' can be opened up to enhance cooling if the duct shape is present in the std moulding. They cannot be made larger than the std moulding.



2024 Lotus Cup Europe – Technical Regulations

- 2.6.14.3.16. Headlamps, front direction indicators and side repeaters including associated mountings are optional. However, if all front lights are removed two driving lamps must be fitted and be in effective working condition.
- 2.6.14.3.17. Rear tailgate can be replaced with lightweight version. This part can be removable so gas strut and hinges can be removed. Material is free.
- 2.6.14.4. Interior may be removed and replaced as required within Motorsport UK requirements. Material is free. This includes the removal off, but is not limited to: Passenger seat, seat belts, electric window motors.
- 2.6.14.5. Sequential gear level mechanism, not to be confused with a sequential gearbox, can be fitted.
- 2.6.14.6. Side windows can be replaced with Polycarbonate or Perspex alternatives, this can include sliders.
- 2.6.14.7. Front windscreens may be replaced with Polycarbonate alternatives.
- 2.6.14.8. Wing mirrors are free.
- 2.6.14.9. A hose ducting fresh air from the front and rear of the vehicle to the front and rear brakes is permitted however no external bodywork modification are permitted to achieve this.
- 2.6.14.10. Front and rear clamshells may be modified solely for the purpose of ease of removal. No other changes are permitted unless specified.
- 2.6.14.11. 20mm front gurney can be added around front edge of radiator outlet.
- 2.6.14.12. Additional heat shielding may be added within the engine bay.
- 2.6.15. Engine:** **Lotus Open**
- 2.6.15.1. Power must not exceed a maximum power output of 260BHP at the hubs as measured by LoTRDC. LoTRDC may adjust the max power by giving two weeks' notice before any round. All cars will require a power test before and then during the season as directed by LoTRDC.
- 2.6.15.2. Toyota engines must remain original i.e. Toyota 2ZZ-GE or 2ZZ-GZE (equipped with an Eaton MP62 supercharger and intercooler). Alternative super charger and intercooler/charge systems are permitted.
- 2.6.15.3. Toyota engineed cars are not permitted any engine modifications including, but not limited to engine internal components. With the exception of the exhaust system and engine ECU, air filter, baffled sump, cams and mapping which are all free.
- 2.6.15.4. Non-Toyota engineed cars will be accepted with an engine that was originally fitted and supplied as standard by Lotus. These cars may be accepted by invite if they have a super charger fitted, taking into account the full specification of the car. For clarification it is permitted to run a Toyota engine in a car originally supplied with a K series engine.
- 2.6.15.5. Normally aspirated non-original engineed cars up to 2.0 litre, may be accepted by invite, on a round by round basis taking into account the full specification of the car.
- 2.6.15.6. Engine & Gear box oil coolers are permitted.



2024 Lotus Cup Europe – Technical Regulations

2.6.15.7. Vehicles may be fitted with Twin Air/Oil coolers. Laminova oil coolers for gear box and engine are permitted. A baffled sump &/or a dry sump is permitted. Additional gauges are permitted.

2.6.16. Suspensions: Lotus Open

2.6.16.1. Damper make is free but may only be a maximum of two way adjustable.

2.6.16.2. Front damper brackets to the chassis may be replaced by the Lotus adjustable mount to raise or lower the upper damper mounting point.

2.6.16.3. Springs are free including the use of helper springs.

2.6.16.4. Vehicles may be fitted with polyurethane or nylatron suspension bushes.

2.6.16.5. Rear anti roll bars are not permitted.

2.6.16.6. Up rated inner rear toe links may be fitted however mounting points must be the same as standard. Front upper wishbones and steering arms can be as factory supplied to Lotus Exige or Lotus 211.

2.6.17. Ride Height and Ground Clearance: Lotus Open

2.6.17.1. See diagram 3.3 in appendices showing illustration of where ride height should be observed on the vehicle.

2.6.17.2. No part of the car between all 4 wheel centres (excluding mud flaps) may be below 95mm.

2.6.17.3. No part of the car (excluding mud flaps) should be below 65mm.

2.6.17.4. Ride height and ground clearance measurements will be taken whilst driver is in the vehicle.

2.6.17.5. No cockpit or remote external remote suspension adjustment devices are permitted. No form of active suspension including magnetic dampers is permitted.

2.6.18. Transmission: Lotus Open

2.6.18.1. Gearbox with a maximum of 6 gears and clutch are free if standard H pattern.

2.6.18.2. A sequential gearbox with 6 gears may be fitted in replacement to the original gearbox. A 30kg weight penalty will be applied to all cars with a sequential gearbox. Paddle shift is permitted.

2.6.18.3. On Exige S2 engine mounts that fit to the gearbox may be changed to accommodate the gearbox. No lowering of the engine or gearbox is permitted. The right-hand engine mount must remain as standard.

2.6.18.4. LSDs are permitted. Gearbox oil coolers and engine mounts are free.

2.6.19. Electrics: Lotus Open

2.6.19.1. Electrics are free but must be as per Motorsport UK regulation J5.14.1-7 (electrical systems).

2.6.19.2. All ECU's must contain only one map. If an aftermarket ECU is fitted drivers must make available to Series Eligibility Scrutineer the hardware and software required to interrogate



2024 Lotus Cup Europe – Technical Regulations

the vehicles ECU. If this is not made available the ECU may be sealed and the driver may not be permitted to race.

2.6.19.3. A pit lane speed limiter is permitted.

2.6.19.4. All cars must be fitted with a series approved data logger.

2.6.20. Brakes: **Lotus Open**

2.6.20.1. Disks are free (steel or iron only – bells are free). However, the bell may not be thickened beyond 13mm.

2.6.20.2. Pads are free.

2.6.20.3. Fluid must be DOT 4 or 5.1.

2.6.20.4. Callipers are free, but a maximum of 4 pistons on the front callipers and 2 pistons on the rear. No modifications are permitted to the hubs, up rights, steering arms or camber blocks.

2.6.20.5. The use of Lotus Twin Master Cylinder Braking system ALS3J0174F is permitted and recommended for those wishing to disable the ABS system.

2.6.21. Wheels: **Lotus Open**

2.6.21.1. Wheel offsets must be the same as the original offsets for the relevant production model.

2.6.21.2. All Wheels must be of metal construction with the exception of the use of Magnesium wheels which are not permitted. Multi-piece wheels are not permitted.

2.6.21.3. Wheel spacers or any other method of changing the track of the vehicle is prohibited.

2.6.21.4. No centre lock wheels are permitted.

2.6.21.5. Wheel diameter on each axle must remain as per the original dimensions for the relevant production car model. Increasing or decreasing wheel size from other Lotus models is not permitted, including fitting Front wheel on Rear or Rear Wheel on Front.

2.6.22. Tyres: **Lotus Open**

2.6.22.1. As supplied control tyre:

Nankang CR-S

195/50R16

215/40R17

225/45R17

225/40R18

2.6.22.2. No modifications to the tyres in any way, (any tyres suspected of being treated/modified will be excluded from the meeting).

2.6.22.3. It is not permitted to fill tyres with nitrogen.

2.6.22.4. Tyres must be purchased from the official series supplier: Nankang Tire Netherlands B.V., Parkstraat 83,2514JG, Den Haag, The Netherlands or their approved supplier.

2.6.23. Weights: **Lotus Open**



2024 Lotus Cup Europe – Technical Regulations

- 2.6.23.1. Lotus Open is based on power to weight with a maximum of 285.7 bhp per tonne. LoTRDC will set a minimum weight for all cars that have not had a verified power test four weeks before the opening round. LoTRDC may adjust the power to weight by giving two weeks' notice before any round. Thus for example:-
- A Vehicle with 240bhp must weigh no less than 840Kg
 - A Vehicle with 230bhp must weigh no less than 805Kg
 - A vehicle with 220bhp must weigh no less than 770Kg
- 2.6.23.2. The minimum weight of vehicles specified in 2.6.15.2 & 2.6.15.4 will be 815kg (this is the weight of the vehicle including the driver)
- 2.6.23.3. This weight is the minimum the car and driver combined must be in race trim after either a race or qualifying session.
- 2.6.23.4. Unless approved in advance by LoTRDC Ltd it is forbidden to use ballast to make up the weight (as in no lightening of the car then ballasting them back up).
- 2.6.23.5. Ballast may only be applied under direction from LoTRDC and where required shall be securely fixed in accordance with J.5.15.1-5.
- 2.6.23.6. Individual cars will have additional weight added to their minimum weights depending on vehicle specification. Current penalties are detailed in section 3.1.1.

2.6.24. Fuel Tank/Fuel: Lotus Open

- 2.6.24.1. Fuel must comply with Art 252, Art 9
- 2.6.24.2. The fuel tank will comply with FT3-1999 as a minimum standard.
- 2.6.24.3. All cars must have a minimum of 3L of fuel remaining in the tank at race finish.
- 2.6.24.4. The Pro Alloy motorsport fuel filler neck assembly – part number LoTRDC001 is permitted.

2.7. Group: GT Cup – for Evora & Emira

2.7.1. Chassis: GT Cup

- 2.7.1.1. The construction type, design and material must remain as standard production or Lotus specification for both the chassis and front sub frame.
- 2.7.1.2. For the Evora the rear sub frame may be lightened and stiffened however no modifications can be made to the mounting point of any component fitted to the sub



2024 Lotus Cup Europe – Technical Regulations

frame with the exception of the lower rear wishbone mounting point which can be moved 10mm outwards on both sides on the standard rear sub frame to match the GT4 specification. The basic design must remain as per the standard car.

2.7.2. Bodywork: GT Cup

- 2.7.2.1. RHD or LHD only, no centre drive vehicles.
- 2.7.2.2. All cars must retain the standard road car's profile (up to and including the Evora GT430) or Evora Cup/GT4/GTC or Emira or Emira Cup/GT4 (including aero pack, and be maintained to a high standard of finish, whilst it's understandable that damage may occur during a weekend, it's important that this is rectified before the next meeting. This is important to keep the image and profile of the series.
- 2.7.2.3. Vehicles must be fitted with standard Lotus supplied bodywork or non-OEM bodywork of the same internal and external dimensions and material of the lotus supplied part.
- 2.7.2.4. Carbon Panels, where available from Lotus may be fitted. This includes, but not limited to, Carbon Roof, Carbon A Panels, Carbon Cosmetic Panel, Carbon Tailgate, Carbon doors (GT2 and GTE types), Carbon Rear Wing, Carbon Roof Scoop.
- 2.7.2.5. The wheel spats as fitted to the Evora GTC car are permitted on the Evora
- 2.7.2.6. Polycarbonate or Perspex side windows are permitted.
- 2.7.2.7. Front windscreens may be replaced with Polycarbonate alternatives.
- 2.7.2.8. The GT4 Carbon rear diffusers or standard Lotus diffusers are permitted, no other types are allowed.
- 2.7.2.9. The additional side intake vents as utilised on the GT4 Evora maybe fitted to the standard rear clamshell. The rear bumper may also but cut away in the same manner as the GT4 car to provide additional engine bay cooling.
- 2.7.2.10. Headlamps, front direction indicators and side repeaters including associated mountings are optional. However, if all front lights are removed two driving lamps must be fitted and be in effective working condition.
- 2.7.2.11. A hose ducting fresh air from the front and rear of the vehicle to the front and rear brakes is permitted however no external bodywork modification are permitted to achieve this.
- 2.7.2.12. A suspension mounted brake cooling system is permitted.
- 2.7.2.13. On the Evora a gurney flap may be added to the rear wing with a maximum height of 20mm.
- 2.7.2.14. Front and rear clamshells may be modified solely for the purpose of ease of removal. No other changes are permitted.
- 2.7.2.15. On the Evora the rear clam, front bumper, rear bumper, doors and engine cover may be non OEM. However, they must retain the original external profile and material but thickness is free.
- 2.7.2.16. On the Evora it is permitted to make amendments to the roof behind the firewall to aid air flow in the engine compartment. However, any holes must be covered in their entirety by a solid intake structure.
- 2.7.2.17. The rear wing height must not exceed 1170mm measured from the ground to the top of the wing including a gurney if fitted. (excluding end plates).



2024 Lotus Cup Europe – Technical Regulations

- 2.7.2.18. If fitted wing end plates must be a minimum of 10mm thick with a maximum thickness of 30mm, with rounded corners.

2.7.3. Engine – Evora only

GT Cup

- 2.7.3.1. The original Engine must be maintained as supplied from the factory including Evora NA and Evora GT4. Alternatively, the 3.5litre Toyota TVS1320 engine & super charger as fitted to the Exige V6 Cup R is permitted. To be clear the 4-litre engine cannot be used in conjunction with a Super charger.
- 2.7.3.2. Evora power must not exceed a maximum power output of 380BHP at the hubs as measured by LoTRDC. LoTRDC may adjust the max power by giving two weeks' notice before any round. LoTRDC will require cars to be power tested before and during the season as directed.
- 2.7.3.3. Lotus engine mount upgrade is permitted, part numbers:
- | | |
|-----------|----------------------------------|
| ALS5E0171 | ENGINE MOUNT, FRT, POLYURATHANE |
| ALS5E0172 | ENGINE MOUNT, REAR, POLYURATHANE |
| ALS5E0173 | ENGINE MOUNT, LH, POLYURATHANE |
- 2.7.3.4. Variable Traction Control is permitted.
- 2.7.3.5. A baffled sump &/or dry sump is permitted.
- 2.7.3.6. Air filter and housing is free.
- 2.7.3.7. The crankshaft pulley must not be modified in any way from the standard component.
- 2.7.3.8. The Pectel ECU must remain as standard fitment. Aftermarket and reprogrammed Engine Control Units (ECU) are not permitted with the exception of the Series Control ECU's and control engine calibrations which are optional (Part number RRR2022a). Competitors using this ECU will not have access to the calibration and agree to the ECU being locked by the series organiser or their partner. Where the original ECU is fitted only standard Lotus Calibrations may be used.
- 2.7.3.9. Where a compressor is fitted the compressor pulley must not be smaller than 65.0mm measured from the outer teeth to outer teeth – see Appendix 3.5 and must not be modified in any way,
- 2.7.3.10. It is permitted to install an air-to-air intercooler for the supercharger. If installed it must be fully contained in the engine compartment. It may not use anything but air as a coolant. Where this is installed a charge cooler is not permitted.
- 2.7.3.11. The Komo-Tec 460 Kit (V6S/350/380) charge cooler system is permitted. Water pump and hoses to the heat exchanger are free.
- 2.7.3.12. Exhaust manifolds must be a Lotus supplied component. Where the S/C Toyota engine is used the Larini manifold part no. LA2809LCEMANI is permitted as an alternative. However, the rear silencer is free.
- 2.7.3.13. Additional engine sensors may be fitted however permission but must be made in writing to the series before undertaking this. An exhaust temperature sensor is permitted.
- 2.7.3.14. The wiring loom can be replaced with a bespoke race type loom. No additional sensors, ECU's, connectors can be added unless permission is received in writing from LoTRDC.



2024 Lotus Cup Europe – Technical Regulations

- 2.7.3.15. An additional oil to air cooler may be fitted.
- 2.7.3.16. Additional heat shielding may be added within the engine bay.
- 2.7.3.17. Pit lane speed limiter &/or launch control are permitted.
- 2.7.3.18. All cars must be fitted with a series approved data logger.

2.7.4. Engine Emira only:

- 2.7.4.1. The original Engine must be maintained as supplied from the factory. It is not permitted to use any form of charge cooling.
- 2.7.4.2. Emira power must not exceed a maximum power output of 425BHP at the hubs as measured by LoTRDC. LoTRDC may adjust the max power by giving two weeks' notice before any round. LoTRDC will require cars to be power tested before and during the season as directed.
- 2.7.4.3. All cars must be fitted with a series approved data logger.

2.7.5. Transmission:

GT Cup

- 2.7.5.1. The Evora may have an alternative sequential gearbox fitted. This can be six or seven speed. In addition, the Lotus Evora GT4 engine mounts may be fitted in conjunction with the sequential gearbox. For clarity ratios may be changed.
- 2.7.5.2. The Emira must retain the standard factory supplied sequential gearbox. For clarity ratios may be changed.
- 2.7.5.3. A Paddle shift system is permitted.
- 2.7.5.4. LSDs are permitted.

2.7.6. Suspensions:

GT Cup

- 2.7.6.1. Damper make is free but may only be a maximum of two way adjustable.
- 2.7.6.2. Front and rear damper mounting brackets to the subframes must remain as standard. On the Evora they may be replaced by the Lotus GT4 mounts to aid access for adjustment purpose.
- 2.7.6.3. Springs are free including the use of helper springs.
- 2.7.6.4. The Evora may be fitted with either standard wishbones or the Lotus wishbones with cross axis joints as fitted to the Evora GT4 car.
- 2.7.6.5. The Evora may be fitted with LoTRDC part number LCEBB01 which is used to stiffen the rear wheel suspension upright.

2.7.7. Ride Height and Ground Clearance:

GT Cup

- 2.7.7.1. See diagram 3.3 in appendices showing illustration of where ride height should be observed on the vehicle.
- 2.7.7.2. No part of the car between all 4 wheel centres (excluding barge board) may be below 85mm.
- 2.7.7.3. No part of the car (excluding barge board) should be below 60mm.



2024 Lotus Cup Europe – Technical Regulations

- 2.7.7.4. Ride height and ground clearance measurements will be taken whilst driver is in the vehicle.
- 2.7.7.5. No cockpit or external suspension adjustment devices are permitted. No form of active suspension including magnetic dampers is permitted.
- 2.7.7.6. LoTRDC may adjust the ride height by giving two weeks' notice before any round.
- 2.7.8. Brakes:** **GT Cup**
- 2.7.8.1. Disks are free (steel or iron only – bells are free). However, the bell may not be thickened beyond 13mm.
- 2.7.8.2. Pads are free.
- 2.7.8.3. Fluid must be DOT 4 or 5.1.
- 2.7.8.4. Callipers are free, but a maximum of 6 pistons on the front callipers and 4 pistons on the rear. No modifications are permitted to the hubs, uprights, steering arms or camber adjustment. On the Lotus Evora the camber adjustment restraint system is recommended.
- 2.7.8.5. The use of Twin Master Cylinder Braking systems is permitted on the Evora and recommended for those wishing to disable the ABS system.
- 2.7.8.6. Race ABS is permitted.
- 2.7.9. Wheels:** **GT Cup**
- 2.7.9.1. Evora max rim size front 8.5J18 min ET52 and rear 10J18 min ET60 for non-wide body cars or front 10J18 min ET40 and rear 12J18 min ET45 for GTC arched cars.
- 2.7.9.2. The Emira rim size will be confirmed four weeks before the opening round.
- 2.7.9.3. All Wheels must be of metal construction with the exception of the use of Magnesium wheels which are not permitted. Multi-piece wheels are not permitted.
- 2.7.9.4. Wheel spacers or any other method of changing the track of the vehicle is prohibited.
- 2.7.10. Tyres:** **GT Cup**
- 2.7.10.1. As supplied control tyre:

Evora: Nankang - 225/40R18 / 265/35R18

The Emira GT4 tyre size will be confirmed no later than 4 weeks before the opening round.
- 2.7.10.2. Tyres must be purchased from the official series supplier: Nankang Tire Netherlands B.V., Parkstraat 83,2514JG, Den Haag, The Netherlands or their approved supplier.
- 2.7.10.3. No modifications to the tyres in any way, (any tyres suspected of being treated/modified will be excluded from the meeting).
- 2.7.10.4. It is not permitted to fill tyres with nitrogen
- 2.7.11. Weights:** **GT Cup**
- 2.7.11.1 The Evora & Emira are based on power to weight.



2024 Lotus Cup Europe – Technical Regulations

The Evora has a maximum of 304 bhp per tonne. The Evora has a minimum weight of 1230kg including driver.

The Emira has a maximum of 304 bhp per tonne. The Emira has a minimum weight of 1415kg including driver.

LoTRDC may adjust the power to weight by giving two weeks' notice before any round.

- 2.7.11.2 This weight is the minimum the car and driver combined must be in race trim after either a race or qualifying session as defined in J 5.15.1-5 (weight/ballast).
- 2.7.11.3 It is forbidden to use ballast to make up the weight (as in no lightening of the car then ballasting them back up).
- 2.7.11.4 Ballast may only be applied under direction from the organisers and where required shall be securely fixed in accordance with J 5.15.1-5.
- 2.7.11.5 Individual cars will have additional weight added to their minimum weights depending on vehicle specification. Current penalties are detailed in section 3.1.1.

2.7.12. Fuel Tank/Fuel: **GT Cup**

- 2.7.12.1. Fuel must comply with Art 252, Art 9
- 2.7.12.2. The fuel tank will comply with FT3-1999 as a minimum standard.
- 2.7.12.3. All cars must have a minimum of 3L of fuel remaining in the tank at race finish.

2.8. Group: Exige Cup

2.8.1. Chassis: **Exige Cup**

- 2.8.1.1. Only originally built Lotus Exige V6 Cup R or Exige V6 Cup upgraded to Exige V6 Cup R specification by Lotus if carrying a Lotus Motorsport/Lotus Build Plate or certificate of upgrade are permitted. An exception may be given to other Exige V6 if upgrade has been checked and approved by Lotus Cars.

2.8.2. Bodywork & Interior: **Exige Cup**

- 2.8.2.1. No bodywork modifications to the originally built Lotus Exige V6 Cup R or Exige V6 Cup upgraded to Exige V6 Cup R specification unless specified in these regulations.
- 2.8.2.2. The use of a gurney flap on the rear wing is permitted with a maximum height of 20mm.
- 2.8.2.3. Seats, harnesses, steering wheel and safety equipment is free but must meet FIA regulations.
- 2.8.2.4. A hose ducting fresh air from the front and rear of the vehicle to the front and rear brakes is permitted however no external bodywork modification are permitted to achieve this.
- 2.8.2.5. Front and rear clamshells may be modified solely for the purpose of ease of removal. No other changes are permitted.
- 2.8.2.6. Front windscreens may be replaced with Polycarbonate alternatives.
- 2.8.2.7. Side windows can be replaced with Polycarbonate or Perspex alternatives, this can include sliders. Glass side windows must be covered in an anti-shatter film.



2024 Lotus Cup Europe – Technical Regulations

- 2.8.2.8. Lotus Exige Cup 380 body work is permitted but must remain as standard production in size, shape, profile and material. This includes barge boards.
- 2.8.2.9. Lotus supplied part A138U0246F Front Splitter Lip Seal may be fitted to the front splitter in the same position as the Exige Cup 430.
- 2.8.2.10. Lotus Exige Cup 380 Engine Cover B138B0680F may be fitted. Dimension must remain as the Lotus supplied component however material may be either GRP or Carbon Fibre.
- 2.8.2.11. Lotus Exige Cup 380 extended side intake ducts may be fitted. Dimension must remain as the Lotus supplied component however material may be either GRP or Carbon Fibre.
- 2.8.2.12. The internal bodywork behind the side scoops may be opened up to improve cooling. However, no modifications can be made to the side scoops themselves.
- 2.8.2.13. Additional hoses ducting fresh air to the engine / engine bay are permitted however no external bodywork modification are permitted to achieve this.
- 2.8.2.14. The rear wing height must not exceed 1150mm measured from the ground to the top of the wing including a gurney if fitted. (excluding end plates).
- 2.8.2.15. If fitted wing end plates must be a minimum of 10mm thick with a maximum thickness of 30mm, with rounded corners.

2.8.3. Engine: Exige Cup

- 2.8.3.1. No engine modifications to the originally built Lotus Exige V6 Cup R or Exige V6 Cup upgraded to Exige V6 Cup R specification.
- 2.8.3.2. Exige power must not exceed a maximum power output of 340BHP at the hubs as measured by LoTRDC. LoTRDC will set a minimum weight & maximum power for all cars at the opening round. LoTRDC may adjust the max power by giving two weeks' notice before any round. LoTRDC will require cars to be power tested before and during the season as directed.
- 2.8.3.3. The Series Control ECU and control engine calibrations are compulsory (Part number RRR2022a). Competitors using this ECU will not have access to the calibration and agree to the ECU being locked by the series organiser or their partner. The original Lotus ECU may be permitted in exceptional circumstances with prior approval from LoTRDC, Where the original ECU is fitted only standard Lotus Calibrations may be used.
- 2.8.3.4. The organisers may reflash the ECU with an approved calibration at the competitor's risk at any point during a race meeting.
- 2.8.3.5. Additional engine sensors may be fitted however permission must be requested in writing to the organisers before undertaking this.
- 2.8.3.6. The RRR pit lane speed limiter &/or RRR launch control are permitted.
- 2.8.3.7. The compressor pulley must not be smaller than 69.0mm measured from the outer teeth to outer teeth – see Appendix 3.5 and must not be modified in any way.
- 2.8.3.8. The Komo-Tec 460 Kit (V6S/350/380) charge cooler system is permitted. Water pump and hoses to the heat exchanger are free.
- 2.8.3.9. The Exhaust manifold must be the Larini Exige V6 manifold part no. LA2809LCEMANI or a standard Lotus supplied component.



2024 Lotus Cup Europe – Technical Regulations

- 2.8.3.10. The catalyst convertor must be either the Larini Exige V6 catalyst part no. LA2810SCATM or the HJS Motorsport catalyst or a standard Lotus supplied component.
- 2.8.3.11. The rear silencer is free.
- 2.8.3.12. The oil cooler can be relocated to behind the righthand lower air intake on the front clam.
- 2.8.3.13. The addition of a heat resistant gasket between the supercharger and manifold is permitted part number LOTRDCHRGEX. The manifold or supercharger can be machined an equivalent amount to offset the additional thickness of the gasket.
- 2.8.3.14. Additional heat shielding may be added within the engine bay.
- 2.8.3.15. The Davies Craig EWP150 Alloy Electric Water Pump & Digital Controller - model number 8970 is permitted
- 2.8.3.16. All cars must be fitted with a series approved data logger.

2.8.4. Transmission:

Exige Cup

- 2.8.4.1. Standard H Pattern gearboxes can run either the Lotus Sports Ratios or standard Gear ratios.
- 2.8.4.2. The Lotus Xtrac sequential gearbox may be fitted in replacement to the original gearbox. The Lotus GT4 engine mounts may be fitted in conjunction with the sequential gearbox. Ratios are free with the sequential gear box.

2.8.5. Suspensions:

Exige Cup

- 2.8.5.1. Dampers may only be a maximum of two way adjustable and must be the standard Lotus components as fitted from new. These may be revalved to suit individual driving styles.
- 2.8.5.2. Springs are free including the use of helper springs.
- 2.8.5.3. All other suspension components must remain as standard Lotus supplied.
- 2.8.5.4. Lotus supplied anti-roll bars are permitted – part numbers A703C0001F and A703D0001F.
- 2.8.5.5. Uprated toe links may be fitted however mounting points must be the same as standard.
- 2.8.5.6. Vehicles may be fitted with either the standard Lotus suspension bushes or a replacement bearing kit. The spherical joints within the rear hub carriers (A132D6006F) may be changed for an alternative component. No modification is permitted to the hub carrier itself.

2.8.6. Ride Height and Ground Clearance:

Exige Cup

- 2.8.6.1. See diagram 3.3 in appendices showing illustration of where ride height should be observed on the vehicle.
- 2.8.6.2. No part of the car between all 4 wheel centres (excluding barge boards) may be below 90mm.
- 2.8.6.3. No part of the car (excluding barge boards) should be below 60mm.
- 2.8.6.4. Ride height and ground clearance measurements will be taken whilst driver is in the vehicle.



2024 Lotus Cup Europe – Technical Regulations

- 2.8.6.5. No cockpit or remote external suspension adjustment devices are permitted. No form of active suspension including magnetic dampers is permitted.
- 2.8.7. Brakes:** **Exige Cup**
- 2.8.7.1. Disks are free (steel or iron only – bells are free). However, the bell may not be thickened beyond 13mm.
- 2.8.7.2. Pads are free.
- 2.8.7.3. The Lotus Race ABS kit is permitted.
- 2.8.7.4. The Komotec Race ABS kit is permitted but must NOT contain the ESP functionality. Competitors must supply the specific part number and specification for the ABS module for scrutineering purposes.
- 2.8.7.5. A twin master cylinder pedal box is not permitted.
- 2.8.7.6. Fluid must be DOT 4 or 5.1.
- 2.8.7.7. Callipers must remain as standard Lotus fitment. No modifications are permitted to the hubs, uprights, steering arms or camber adjustment.
- 2.8.8. Wheels:** **Exige Cup**
- 2.8.8.1. Max rim size front 7.5J17 min ET26 and rear 10J18 min ET32.
- 2.8.8.2. All Wheels must be of metal construction with the exception of the use of Magnesium wheels which are not permitted. Multi-piece wheels are not permitted.
- 2.8.8.3. Wheels spacers or any other method of changing the track of the vehicle is prohibited.
- 2.8.8.4. No centre lock wheels are permitted.
- 2.8.9. Tyres:** **Exige Cup**
- Nankang - 215/40R17 / 265/35R18
- 2.8.9.1. No modifications to the tyres in any way, (any tyres suspected of being treated/modified will be excluded from the meeting).
- 2.8.9.2. Tyres must be purchased from the official series supplier: Nankang Tire Netherlands B.V., Parkstraat 83,2514JG, Den Haag, The Netherlands or their approved supplier.
- 2.8.9.3. It is not permitted to fill tyres with nitrogen
- 2.8.10. Weights:** **Exige Cup**
- 2.8.10.1 The Exige (V6 Cup) is based on power to weight. With a minimum weight of 1110kg. LoTRDC will set a minimum weight & maximum power for all cars at the opening round. LoTRDC may adjust the power to weight by giving two weeks' notice before any round.
- 2.8.10.2 This weight is the minimum the car and driver combined must be in race trim after either a race or qualifying session as defined in J 5.15.1-5 (weight/ballast).
- 2.8.10.3 It is forbidden to use ballast to make up the weight (as in no lightening of the car then ballasting them back up).



2024 Lotus Cup Europe – Technical Regulations

2.8.10.4 Ballast may only be applied under direction from the organisers and where required shall be securely fixed in accordance with J 5.15.1-5.

2.8.10.5 Individual cars will have additional weight added to their minimum weights depending on vehicle specification. Current penalties are detailed in section 3.1.1.

2.8.11. Fuel Tank/Fuel:

Exige Cup

2.8.11.1. Fuel must comply with Art 252, Art 9

2.8.11.2. The fuel tank will comply with FT3-1999 as a minimum standard.

2.8.11.3. All cars must have a minimum of 3L of fuel remaining in the tank at race finish.

2.9. Numbers/Decals for all Groups

2.9.1. FIA Regulations apply regarding competition numbers and backgrounds which must be displayed to the satisfaction of the Timekeepers.

2.9.2. Series livery will be provided by the LoTRDC for display on all cars for;

- Sill panel series sponsor logos (both sides)
- Door cards (both sides) with one set of numbers
- LoTRDC decals (both sides)
- Windscreen sun visor
- Front number panel
- Rear number plate
- Front and rear bumpers (both sides)



2024 Lotus Cup Europe – Technical Regulations

Other series decals as from time to time may be required.

- 2.9.3.** Series livery will be positioned as numbered and defined in 3.2.
- 2.9.4.** Drivers will be required to display three series sponsor logos on race suits.
- 2.9.5.** LoTRDC will supply one set of series livery. Replacement vinyl can be purchased at events.
- 2.9.6.** Competitors will not be allowed to display sponsor logos (e.g. tyre manufacturers / lubricants suppliers) which conflict with series sponsor logos without prior written consent from the series co-ordinator.
- 2.10. Trade Support Vehicle Decals**
 - 2.10.1.** Series decals will be provided and may be fixed to series trade support vehicles if wished.
 - 2.10.2.** Trade support vehicles should not display sponsor logos which conflict with Series sponsor logos when in the Lotus Cup Europe Paddock.
 - 2.10.3.** Advertising and sponsorship on all race cars, trucks or overalls of any competitor entering the Lotus Cup Europe must conform to the Motorsport UK Bluebook definitions of legality and decency. Competitors will be asked to remove any signage that might be deemed offensive or inappropriate. Competitors are encouraged to seek the permission of the series organizers in cases where there is uncertainty.

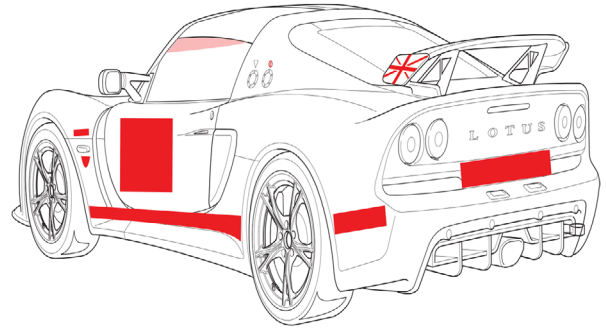
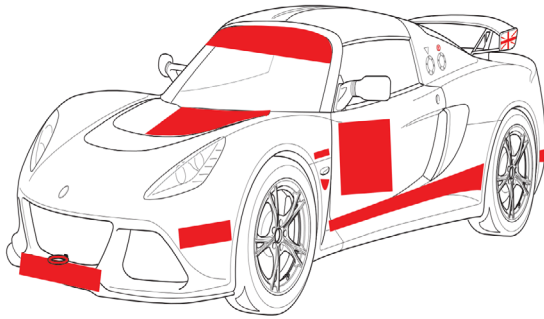
2024 Lotus Cup Europe – Technical Regulations

3. APPENDICIES

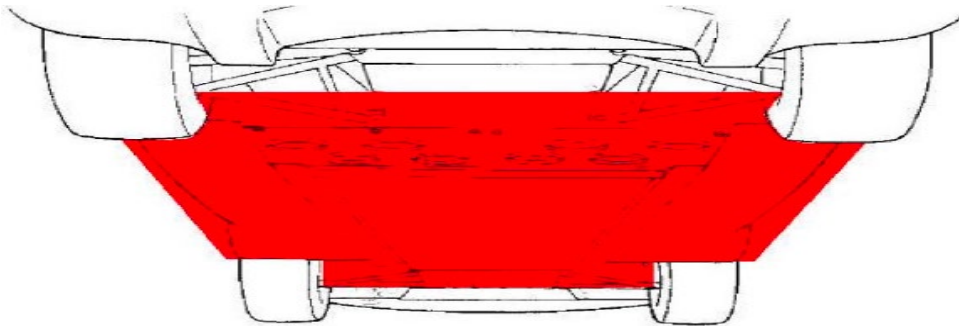
3.1. Weight Penalties

3.1.1 Sequential Gearbox 2-Eleven & Open Minimum Weight + 30kg

3.2. Series Livery Placement



3.3. Ride height measurement area

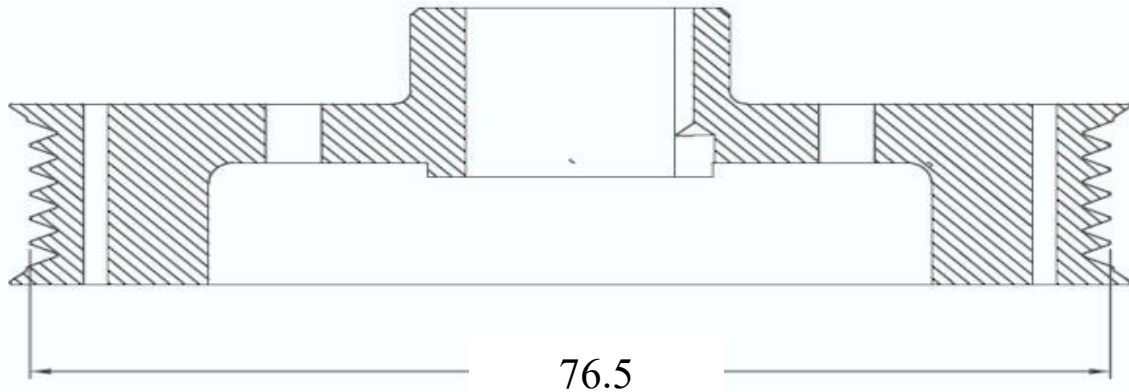


3.4. Permitted Front Spoilers Examples



2024 Lotus Cup Europe – Technical Regulations

3.5. Compressor pulley measurement



3.6. Intellectual, Commercial, Merchandising and Sponsorship Rights

The Intellectual, Commercial, Merchandising and Sponsorship Rights of the Lotus Cup Europe series are the property of LoTRDC Ltd and may not be assigned to any other party or person without their written agreement.

3.7. Television

- 3.7.1. LoTRDC Ltd, retain exclusive broadcasting, recording, cable, satellite, digital, video, games, internet and interactive rights and rights to all other mediums to film and record the participation of the driver, entrant, sponsor and any other team member in the events and activities throughout the season and to assign or otherwise deal with such surrender of his/her rights (if any) in such matters, which may then be used at the series promoter's discretion.
- 3.7.2. No sponsorship decals may be carried on the dashboard or in any position that may be visible from an in-car camera without the express permission of the series organisers.